



# CONTROLLERS AND ANCILLARY ELECTRONICS

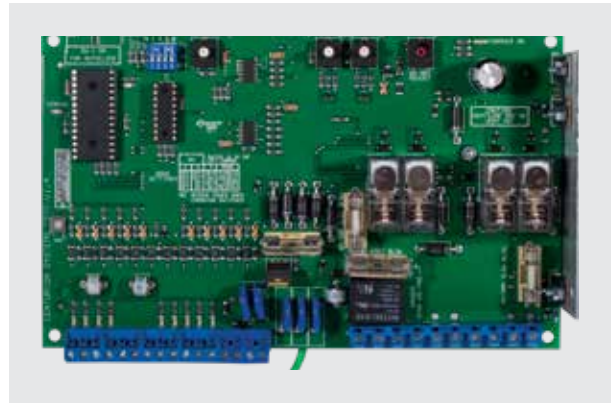
Not only do we stock a range of intelligent controllers for our own operators, but we even offer high-quality universal controllers that can be used for a wide variety of applications. In addition, our ancillary solutions are tailor-made to help you get the most out of your installation. All our controllers incorporate advanced onboard lightning protection and diagnostics.



**CP75 - DC MOTOR CONTROLLER**

Product Code: CP75V2

Electronic controller for use with the **R3** and **R5** range of rotary swing gate operators.



**CP77 - DC MOTOR CONTROLLER**

Product Code: CP77 / CP7724V

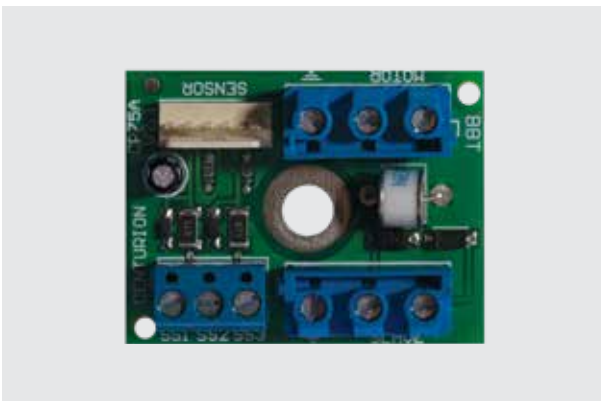
An incredibly versatile DC controller that can be used with a wide variety of swing and sliding gate operators, including **Beninca**, **FAAC**, **SupaSlida** and **AutoMate**.

**MAIN FEATURES**

- Adjustable Autoclose timer – gate is never left open unnecessarily
- Diagnostic LEDs for easy programming
- Dedicated Pillar Light Relay
- The following onboard inputs and outputs are provided:
  - Free-exit input
  - Trigger input
  - Solenoid lock connection
  - 12V DC output for auxiliary devices such as external receivers, gate safety beams, etc.
  - Input for infrared safety beams
  - Pedestrian Opening input
  - Dedicated Holiday Lockout input
- Fuse-protected

**MAIN FEATURES**

- Proven lightning protection
- High immunity to noise – not affected by external interference
- Micro-controller platform allows customisation – improved versatility
- Trigger input with local test button – useful for testing the operation of the device when a transmitter is not available
- Pedestrian Opening input - prevents unauthorised vehicle access
- Safety beam input – connecting infrared safety beams dramatically increases the safety of the automated system
- Local and remote multi-function Gate Status LED
- Free-exit input (only opens gate) – ideal for fitting free-exit ground loops or pushbuttons in townhouse and high-volume vehicle access applications
- Holiday Lockout input – ensures that gate cannot be opened when homeowners are away
- Timed potential-free contact (e.g. Courtesy Lights)
- Low-voltage switching of potential-free contact
- Selectable/adjustable Autoclose timer (5 – 45 seconds)
- Override of Autoclose timer via trigger input
- Local diagnostic LEDs for easy programming
- Available in 12V and 24V DC variants



**CP75A - SLAVE MOTOR TERMINATION BOARD**

Product Code: CP75B

An electronic interface for communicating with the master controller when a second **R3/R5** rotary swing gate operator is installed.



### CP80 - DC MOTOR CONTROLLER

Product Code: CP80D3 / D5

Electronic controller for use with the **D3** and **D5** range of sliding gate operators.

#### MAIN FEATURES

- Proven lightning protection
- Trigger input with local test button– useful for testing the operation of the device when a transmitter is not available
- Pedestrian Opening input - prevents unauthorised vehicle access
- Safety Beam input – connecting infrared safety beams dramatically increases the safety of the automated system
- Local and remote multi-function Gate Status LED
- Free-exit input (only opens gate) – ideal for fitting free-exit ground loops or pushbuttons in townhouse and high-volume vehicle access applications
- Holiday Lockout input - ensures that gate cannot be opened when home owners are away
- Timed potential-free contact (e.g. Courtesy Lights)
- Low-voltage switching of potential-free contact
- Selectable/adjustable Autoclose timer (1 – 255 seconds)
- Override of Autoclose timer via trigger input
- Local diagnostic LEDs for easy programming



### CP87 - DC MOTOR CONTROLLER

Product Code: CP87

A basic single-channel DC controller for use with certain sliding and swing gate operators.

#### MAIN FEATURES

- Proven lightning protection
- Reliable position control via limit switches
- Pedestrian Opening input - prevents unauthorised vehicle access
- 12V DC output for auxiliary equipment such as an external radio receiver



### CP88 - DC MOTOR CONTROLLER

Product Code: CP88

Electronic controller for use with the **CENTRY** DC-operated traffic barrier.



### CP91 - AC MOTOR CONTROLLER

Product Code: CP91

The **CP91** AC controller is a versatile controller designed to drive single-phase 220V AC motor systems. Reliability is enhanced through comprehensive surge and lightning protection, high noise-immunity and zero cross-switching.

#### MAIN FEATURES

- Onboard sensitivity adjustment
- Inductive Loop Detector input
- Safety Beam input for fitting additional safety devices
- Selectable Autoclose – ensures that the barrier is never left open unnecessarily
- Local diagnostic LEDs for easy programming



### CP200 - INVERTER MODULE

Product Code: CP200EV3

The Inverter rectifies the 230V AC input into 310V DC while also changing the single-phase input into the three-phase supply needed to operate the **A10** electric motor.

#### MAIN FEATURES

- Proven lightning protection
- High immunity to noise – not affected by external interference
- Micro-controller platform allows customisation – improved versatility
- Trigger input with local test button – useful for testing the operation of the device when a transmitter is not available
- Pedestrian Opening input - prevents unauthorised vehicle access
- Safety Beam input – connecting infrared safety beams dramatically increases the safety of the automated system
- Local and remote multi-function Gate Status LED
- Free-exit input (only opens gate) – ideal for fitting free-exit ground loops or pushbuttons in townhouse and high-volume vehicle access applications
- Timed potential-free contact (e.g. Courtesy Lights)
- Low-voltage switching of potential-free contact
- Selectable/adjustable Autoclose timer (5 - 40 seconds)
- Override of Autoclose timer via trigger input
- Local diagnostic LEDs for easy programming
- 12V DC auxiliary supply at 150mA



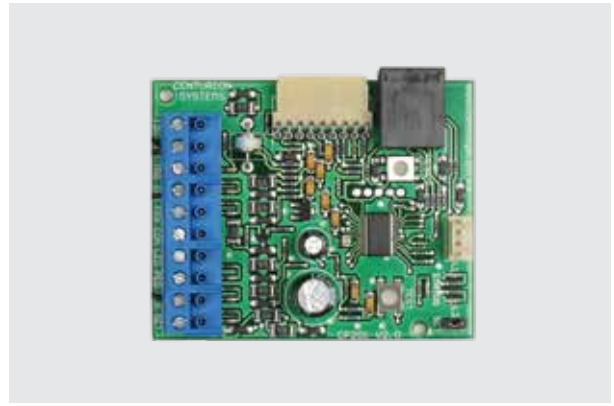
### CP93 - DUAL AC MOTOR CONTROLLER

Product Code: CP93

The **CP93** Dual AC controller is a controller card designed to control a pair of gates driven by AC induction motors in various configurations.

#### MAIN FEATURES

- Designed to allow full control of a set of double swing gates that interleave, irrespective of the operator, and with or without the use of limit switches
- Installer User Interface allows full customisation of the various programming features
- Adjustable relay switching time to prevent relay contact arcing
- Trigger input with local test button – useful for testing the operation of the device when a transmitter is not available
- Pedestrian Opening input - prevents unauthorised vehicle access
- Safety Beam input – connecting infrared safety beams dramatically increases the safety of the automated system
- Local and remote multi-function Gate Status LED
- Free-exit input (only opens gate) – ideal for fitting free-exit ground loops or push-buttons in townhouse and high-volume vehicle access applications
- Timed potential-free contact (e.g. Courtesy Lights)
- Low-voltage switching of potential-free contact
- Selectable/adjustable Autoclose timer (1 - 255 seconds)
- Override of Autoclose timer via trigger input
- Three-digit display for easy programming
- 12V DC auxiliary supply for connecting safety beams, external receivers, keypads, etc.



### CP201 - AC MOTOR CONTROLLER

Product Code: CP201V3

Electronic controller for use with the **A10** industrial sliding gate operator.

#### MAIN FEATURES

- Proven lightning protection
- High immunity to noise – not affected by external interference
- Trigger input with local test button – useful for testing the operation of the device when a transmitter is not available
- Pedestrian Opening input – prevents unauthorised vehicle access
- Safety Beam input – connecting infrared safety beams dramatically increases the safety of the automated system
- Local and remote multi-function Gate Status LED
- Free-exit input (only opens gate)
- Timed potential-free contact (e.g. Courtesy Lights)
- Low-voltage switching of potential-free contact
- Selectable/adjustable Autoclose timer (1 - 255 seconds)
- Override of Autoclose timer via trigger input
- Local diagnostic LEDs for easy programming and diagnostics
- 12V DC auxiliary supply connecting safety beams, external receivers, keypads, etc.



## D5 SMART - DC MOTOR CONTROLLER

Advanced and intelligent controller for the D5 SMART sliding gate motor, featuring wireless connectivity for setup from smartphone.



### MAIN FEATURES

- Combining futuristic technology with the user-friendly design that has become the hallmark of CENTURION's gate automation solutions, the D5 SMART is equal parts sophistication and simplicity.
- Boasting wireless convenience and fast operating speed for greater security, not to mention a host of advanced features, the D5 SMART has everything you ever wanted in a gate motor...and more!
- SMART speed- At 30m/minute and with safe anti-crushing protection, the D5 SMART strikes the perfect balance between safety and security.
- SMART connectivity- Open your gate from anywhere using your smartphone, plus set up unique, individual profiles for everyone using the gate.
- SMART diagnostics- Self-testing functionality measures and monitors the system's performance.
- SMART hardware- We'll have you sliding in no time thanks to simplified installation.
- SMART logging- The D5 SMART provides intelligent feedback on your operator's overall functioning and reports on events such as the last remote pressed, the condition of the battery, gate status as well as the speed at which the gate is running, delivering maximum peace of mind and giving you the SMART experience.
- Vibration sensor that can be connected to a third party device to notify you in the event that the gate motor is being tampered with
- Intelligent battery charger with onboard diagnostics and SMART communication between the charger and the controller
- Improved position control system incorporating hall effect technology – highly resistant to interference
- Individually-configurable inputs and outputs

## D2 TURBO & D2 TURBO LOW-VOLTAGE - DC MOTOR CONTROLLERS

The exceptionally user-friendly interface used to configure the D2 Turbo domestic sliding gate operator, complete with charger and onboard CENTURION code-hopping multichannel receiver. The twin dial-system makes setting up and commissioning veritable child's play.

The D2 Turbo Low-Voltage controller has an input voltage range of 10V - 20V AC/10V - 28V DC, which means that it can be powered using a step-down transformer mounted in the house and fed via inexpensive low-voltage cables.



### MAIN FEATURES

- Fully-sealed plastic housing to prevent ingress of dirt and insects
- Easy setup using the Function and Setting Dials and the pushbutton
- Removable connectors for easy maintenance
- Watchdog IC ensures full and safe operation of the controller
- Optional Backup Memory Module allows backing up of all the information that has been set up in the system
- Opening and Closing Safety Beam inputs with Beam Circuit functional test
- High-security cleared beam Autoclose, in conjunction with Safety Beams (PIRAC)
- Multiple Modes of Operation: Standard Mode, Open Only Mode, Reversing Mode, and with operator Pre-flashing Modes
- Automatic closing with adjustable time delay, and pushbutton override
- Remote Gate Status Indicator (gate position, power failure, low battery, multiple collision detection and Pillar Light Status indication)
- Pedestrian Opening
- Holiday Lockout
- Courtesy/Pillar Light (Fixed duration), with pre-delays and two Pre-flashing Modes
- Selectable gate speed modes – Low Speed/High Speed (High Speed is the default)
- Positive Close Mode (e.g. ensure activation of electric fence contact switch)
- Onboard multichannel CENTURION code-hopping receiver with the ability to learn remote control buttons to specific functions (e.g. Gate trigger, Pedestrian Opening, Holiday Lockout)
- Low-voltage AC or DC input – ideal for sites with no mains power at the gate<sup>1</sup>
- No need to fit costly isolators<sup>1</sup>

1. Applies to D2 Turbo Low-Voltage only

## D5-EVO & D5-EVO LOW-VOLTAGE - DC MOTOR CONTROLLERS

The intelligence behind the tried, trusted and perfected D5-Evo domestic and light-industrial sliding gate operator. This intelligent controller allows for truly intuitive programming of the operator, with a Setup Wizard guiding the user through the entire commissioning procedure.

The D5-Evo Low-Voltage controller has an input voltage range of 15V - 19V AC, which means that it can be powered using a step-down transformer mounted in the house and fed via inexpensive low-voltage cables.



### MAIN FEATURES

- Fully-sealed plastic housing for controller to prevent ingress of dirt and insects
- Easy setup of controller using LCD interface
- Removable connectors on controller for easy maintenance
- Watchdog IC ensures full and safe operation of controller
- Optional Backup Memory Module allows backing up of all the information that has been set up in the system
- Opening and Closing Safety Beam inputs with Beam Circuit functional test
- High-security cleared beam Autoclose, in conjunction with Safety Beams (PIRAC)
- Break-in and Ambush Alarm (a world first) with configurable outputs via onboard buzzer, Pillar Light Relay, etc.
- Multiple Modes of Operation: Standard Mode, Condominium Mode (multi-user), Reversing Mode, PLC and Deadman Control Mode
- Automatic closing with adjustable time delay, and pushbutton override
- Remote Gate Status Indicator (gate position, power failure, low battery, multiple collision detection and Pillar Light Status indication)
- Pedestrian Opening
- Free-exit facility
- Holiday Lockout – configurable as Emergency Stop
- Courtesy/Pillar Light (adjustable), with pre-delays and two Pre-flashing Modes
- Multiple Operating Profiles to suit region of installation-select between ZA, CE, etc.
- Full configuration of gate operating parameters, including independent gate opening and closing speeds, ramp-up and ramp-down distances and crawl speed
- Positive Close Mode (e.g. ensure activation of electric fence contact switch)
- Onboard multichannel CENTURION code-hopping receiver with the ability to:
  - Learn transmitter buttons to specific functions (e.g. Gate trigger, Pedestrian Opening, Free-exit, Pillar Light Control, Holiday Lockout)
  - Selectively delete specific transmitters that have been lost or stolen
  - Automatically learn transmitters into the system (Autolearn)
  - Automatically delete transmitters that are no longer in use (Delete-Not-Present)
- Integrated ChronoGuard (a world first) with Real Time Clock and Calendar timer offering multichannel time-activated and time-barring functionality
- Auxiliary output can be configured via the ChronoGuard timer to provide timer functionality to external devices, such as security lights, entrance fountain, etc.
- Low-voltage AC or DC input – ideal for sites with no mains power at the gate <sup>1</sup>
- No need to fit costly isolators <sup>1</sup>

<sup>1</sup>. Applies to D-Evo Low-Voltage only



## D10 AND D10 TURBO - DC MOTOR CONTROLLER

The “brains” part of the winning “Brains and Brawn” combination that makes the D10 and D10 Turbo the automatic choice for industrial applications. CENTURION’s proven 24V DC technology with an intelligent LCD controller with multiple Modes of Operation greatly simplifies setup and diagnostics.



### MAIN FEATURES

- Fully-sealed plastic housing for controller to prevent ingress of dirt and insects
- Easy setup of controller using LCD interface
- Removable connectors on controller for easy maintenance
- Watchdog IC ensures full and safe operation of controller
- Optional Backup Memory Module allows backing up of all the information that has been set up in the system
- Opening and Closing Safety Beam inputs with beam circuit functional test
- High-security cleared beam Autoclose, in conjunction with Safety Beams (PIRAC)
- Break-in and Ambush Alarm (a world first) with configurable outputs via onboard buzzer, Pillar Light Relay, etc.
- Multiple Modes of Operation: Standard Mode, Condominium Mode (multi-user), Reversing Mode, PLC and Deadman Control Mode
- Automatic closing with adjustable time delay, and pushbutton override
- Remote Gate Status indicator (gate position, power failure, low battery, multiple collision detection and Pillar Light Status indication)
- Pedestrian Opening
- Free-exit facility
- Holiday Lockout – configurable as Emergency Stop
- Courtesy/Pillar Light (adjustable), with pre-delays and two Pre-flashing Modes
- Multiple Operating Profiles to suit region of installation – select between ZA, CE, etc.
- Full configuration of gate operating parameters, including independent gate opening and closing speeds, ramp-up and ramp-down distances and crawl speed
- Positive Close Mode (e.g. ensure activation of electric fence contact switch)
- Onboard multichannel CENTURION code-hopping receiver with the ability to:
  - Learn transmitter buttons to specific functions (e.g. Gate trigger, Pedestrian Opening, Free-exit, Pillar Light Control, Holiday Lockout)
  - Selectively delete specific transmitters that have been lost or stolen
  - Automatically learn transmitters into the system (Autolearn)
  - Automatically delete transmitters that are no longer in use (Delete-Not-Present)
- Integrated ChronoGuard (a world first) with Real Time Clock and Calendar timer offering multichannel time-activated and time-barring functionality
- Auxiliary output can be configured via the ChronoGuard timer to provide timer functionality to external devices, such as security lights, entrance fountain, etc.



## V-SERIES CONTROLLER - DC MOTOR CONTROLLER

There is virtually no limit to the capabilities of our swing gate operators; combining industry-leading functionality, world-class reliability and ease of installation, CENTURION swing gate operators truly are in a league of their own, with an intelligent logic controller.



### MAIN FEATURES

- Separate weatherproof housing for dual-channel controller, battery and charger
- Fully-sealed plastic housing for controller to prevent ingress of dirt and insects
- Easy setup of controller using LCD user interface
- Removable connectors on controller for easy maintenance
- Watchdog IC ensures full and safe operation of controller
- Onboard multichannel CENTURION code-hopping receiver with the ability to:
  - Learn transmitter buttons to specific functions (e.g. Gate trigger, Pedestrian Opening, Free-exit, Pillar Light Control, Holiday Lockout)
  - Selectively delete specific transmitters that have been lost or stolen
- Multiple Modes of Operation, including Standard Mode and Condominium Mode (multi-user)
- Full configuration of gate opening parameters, including independent gate opening and closing speeds, ramp-up and ramp-down distances and end-of-travel crawl distance
- Automatic Closing with adjustable time, pushbutton override and selectable according to gate status
- Selectable leaf delay on either gate leaf
- Advanced Positive Close Mode ensuring the gate remains closed in a secure, rigid position
- Multiple Operating Profiles to suit region of installation – select between ZA, CE, etc.
  - Pedestrian Opening (adjustable opening and Autoclose time)
  - Remote Gate Status Indicator (gate position, power failure, low battery, multiple collision detection and Pillar Light status indication)
  - Courtesy/Pillar Light Timer with adjustable time
  - Fully configurable pre-delays with Pre-flashing Modes
  - Opening and Closing Safety Beam inputs with beam circuit functional test
  - High-security cleared-beam Autoclose in conjunction with Safety Beams (PIRAC)
  - Break-in and Ambush Alarms (a world first) with configurable outputs via onboard buzzer, Pillar Light Relay, etc.
  - Free-exit facility
  - Advanced solenoid or magnetic gate-lock release pulse

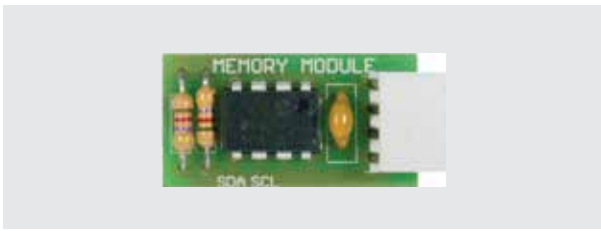
## SECTOR II / CLAWS - DC CONTROLLER

Traffic barriers offer a formidable means of controlling vehicular access, and we have gone to great lengths to ensure that, with the intelligent LCD controller, CENTURION barriers are easy to set up and can handle the heaviest of traffic volumes while simultaneously offering superior security and many features.



### MAIN FEATURES

- Fully-sealed plastic housing for controller to prevent ingress of dirt and insects
- Easy setup of controller using LCD interface
- Removable connectors on controller for easy maintenance
- Watchdog IC ensures full and safe operation of controller
- Optional Backup Memory Module allows backing up of all the information that has been set up in the system
- Standard plug-in bases pre-configured for approved 12V DC closing and free-exit inductive loop detectors
- Adjustable and removable controller mounting tray for easy wiring and commissioning
- Barrier Raise and Lower inputs
- Memory and non-memory barrier activation
- Onboard multichannel CENTURION code-hopping receiver with the ability to:
  - Learn transmitter buttons to specific functions (e.g. Memory Input, Non-memory Input, Barrier Raise, Barrier Lower, Holiday Lockout)
  - Selectively delete specific transmitters that have been lost or stolen
  - Automatically learn transmitters into the system (Autolearn)
  - Automatically delete transmitters that are no longer in use (Delete-Not-Present)
- Full configuration of barrier operating parameters including independent pole raise and lowering speeds, ramp-up and ramp-down angles
- Automatic lowering
- Multiple Operating Profiles to suit region – select between ZA, CE, etc.
- Multichannel controller with integrated ChronoGuard timer technology (a world first):
- Free-exit facility
- Remote boom pole status indicator (pole position, power failure, low battery, multiple collision detection and security light status indication)
- Courtesy/Pillar Light Timer with adjustable duration
- Fully configurable pre-delays with Pre-flashing Modes
- Safety/Closing Beam input with Beam Circuit function test
- Lock/Emergency Stop input
- Ticket Vend Interlock which enables connectivity to a ticket vending machine



**MEMORY MODULE - BACKUP MEMORY MODULE**

Product Code: PCA12201V1.0 (for D-Series Controllers); CP108 (for SMARTGUARD and SMARTGUARDair keypad); PCA11667V1 (for Lattice Controller)

Available in three versions, the Memory Module is used to create a backup of the onboard memory of all D-Series and SECTOR II / CLAWS controllers (except V-Series), SMARTGUARD and SMARTGUARDair keypads, and the Lattice controller. During a backup, the entire memory of the controller is backed up, including all settings and remote controls. In the case of the D-Series controllers equipped with ChronoGuard, all Time-periods that have been set, will also be backed up. This backup can then be used to restore the memory contents in the event that the controller has to be replaced.



**CP78 - MULTI-LED DRIVER PCB**

Product Code: CP78

The CP78 can be used to power multiple LEDs connected in parallel, and can also be employed for interlocking two operators. Most controllers provide only 4.5V on the LED output and can therefore power a maximum of three LEDs; however, the CP78 uses 12V DC to switch a relay via a transistor input and can provide power to an unlimited number of LEDs. This is especially useful in multi-user intercom applications comprising numerous handsets, where each handset requires a gate status LED.



**CP76 - RELAY RECTIFIER PCB**

Product Code: CP76

A useful and versatile card which can be used in many access control applications. Its purpose is to convert a 12V AC or DC voltage signal to a potential-free (voltage-free) contact.

Typical applications include:

- Converting the 12V AC output signal from an intercom (that is normally used for powering a strike lock), into a voltage-free contact that can be used to trigger a gate operator, a garage door operator, etc.
- Converting the open-collector outputs found on the CENTURION SupaSMART, SupaNOVA, SMARTGUARDair keypad, SOLO or Lattice proximity tag reader to a potential-free contact



**CP79V2 - UNIVERSAL TIMER BOARD/PULSE-STRETCHER**

Product Code: CP79V2

This is a handy timer card, which can be used in many access control applications. A trigger input will latch the output for a variable time.

Typical applications include:

- Activating a continuous door strike
- Releasing a magnetic lock
- Driving a cooling fan
- Pillar Lights
- Alarms

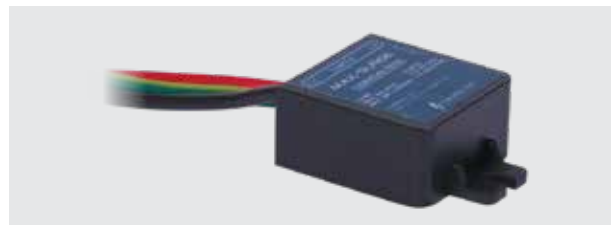


**CP107 - BATTERY SAVER MODULE**

Product Code: CP107

The CP107 is designed to prevent your 12V lead-acid battery from going below 10.6V during a mains power failure. Should the battery voltage drop to 10.6V during a mains power failure, the CP107 automatically disconnects the battery from the load circuitry. Once mains power is restored the battery saver automatically resets, allowing your battery to recharge to full capacity.

The CP107 is supplied with colour-coded wiring and pre-attached lugs, making it quick and easy to connect to any 12V system. Once connected, the CP107 is small enough to be tucked away inside the various CENTURION enclosures.



**PLUG-IN SURGE PROTECTOR**

Product Code: CL12-00370

Protect your gate motor's electronics by fitting a mains supply surge limiter upstream. The CL12 'clamps' high voltages and offers effective protection against lightning and power surges.





## OUR DIGITAL AND ONLINE BRAND PRESENCE AND SUPPORT

### WEBSITE

- Landing pages in French, Spanish, Portuguese and Thai
- Access to product documentation, comparison charts and diagnostic guides
- Device software
- G-WEB PLUS interface for administering CENTURION GSM devices
- Massive library of useful articles
- <http://www.centsys.com>

### SUPPORT

- Dedicated technicians, unrivalled backup support and friendly and efficient sales personnel
- Technical support in all official languages, as well as French, Spanish and Portuguese
- Call centre operates 7am to 6pm (GMT +2), Monday to Friday and 8am to 4:30pm (GMT +2) on Saturdays

### SOCIAL MEDIA

- “Like” our Facebook page ([www.facebook.com/centurionsystems](http://www.facebook.com/centurionsystems)) and follow us on Twitter (@askCenturion) for all the exciting company news, launches, roadshows, competitions as well as technical and sales support
- Subscribe to our YouTube channel for access to an extensive library of how-to videos and tutorials
- Interesting and innovative installations from around the world, including unusual uses of CENTURION products
- Are you on our YouTube channel? Showcase your installations!

### NEWSLETTER

- Fantastic way of staying abreast of company news, developments, events and functions, new products and enhancements to existing range



## INDUSTRY-LEADING PRODUCT TECHNOLOGIES

### TECHNOLOGY

CENTURION products feature a host of industry-leading technologies, all conducive to greater security, greater convenience and superior functionality. Just some of the advanced technologies found in our products are:

- **ChronoGuard** – a world-first timer technology that allows the user to set a myriad Auto-activation and Time-barring functions using the onboard Real Time Clock and Calendar, which tracks the date up to the year 2099
- **Intruder-detection Alarms** – The novel feature-set – consisting of the Beam Alarm and Ambush Alarm - ups the security ante even further by providing an audible output when the infrared gate safety beams are obstructed, or remain interrupted for a pre-defined period of time
- **Code-hopping technology** – CENTURION remote controls are equipped with code-hopping encoders which process the outgoing transmission through a sophisticated encryption engine, making copying and cloning virtually impossible. No two transmitted codes will ever be alike

- **Onboard diagnostics** – Our D-Series range provides both audible and visual feedback of the gate status at any given time. In addition, a designated diagnostic screen makes fault-finding a breeze
- **High-volume capability** – CENTURION operators are designed to work hard, and work hard they do – with some operators such as the SECTOR II traffic barrier being capable of performing in excess of 3000 operations every single day



**Connect with us on**

 [facebook.com/CenturionSystems](https://facebook.com/CenturionSystems)

 [YouTube.com/CenturionSystems](https://YouTube.com/CenturionSystems)

 [Twitter@askCenturion](https://Twitter@askCenturion)

 [Instagram@centurion.systems](https://Instagram@centurion.systems)

Newsletter subscription: [www.centsys.com/Subscribe](http://www.centsys.com/Subscribe)

**[www.centsys.com](http://www.centsys.com)**

**Sharecall 0860 CENTURION (0860 236 887)  
+27 11 699 2400**

**Sharecall Technical Support 0861 003 123  
+27 11 699 2481  
from 07h00 to 18h00 (GMT+2)**

**Sharecall numbers applicable when dialled  
from within South Africa only**

The products depicted are for illustrative purposes only. Actual products may differ.

**E&OE. Centurion Systems (Pty) Ltd. reserves the right to change any product without prior notice.**

All product and brand names in this document that are accompanied by the ® symbol are registered trademarks in South Africa and/or other countries, in favour of Centurion Systems (Pty) Ltd, South Africa. The Centurion Systems logo, all product and brand names in this document that are accompanied by the TM symbol are trademarks of Centurion Systems (Pty) Ltd, in South Africa and other territories; all rights are reserved.

We invite you to contact us for further details.